

EQUIPMENT PLACEMENT Sales and Services



Quality Products for
Mining and Industry



www.equipmentplacement.com.au



773D

CAT

773D

CATERPILLAR

FIRE EXTINGUISHER



Equipment Placement has been providing quality products and services to the mining and construction industry since 2002.

The company is proud of its ability to attract quality suppliers with some of the most innovative and cost efficient products introduced to the mining industry in recent times.

The dedicated sales and support team at Equipment Placement are always on hand to assist our wide ranging customer base which includes many world leaders in mining covering numerous countries.

The focus to provide our customers with premium quality products and continue to build and reward our hard working team members remain our priority.

In addition to the products and services shown in this brochure, Equipment Placement Sales & Services also supplies the complete range of products and services sold and distributed by **Fluid Transfer Management** and **Filter Technology**.





Mack Metroliner service truck

Built for reliable operation in tough conditions

Equipment Placement's service trucks, fuel trucks, water trucks and modules are designed specifically for mining and construction work, servicing heavy equipment in the most testing conditions. All our trucks are built tough to withstand harsh conditions and are fitted with high quality equipment and components.

Versatile

Can be designed to fit a large range of 4x2, 4x4, 6x4, 6x6, 8x4 and 8x8 cab chassis trucks. Equipment Placement can supply standard tank, compartment and equipment layouts, or configure your vehicle to suit your own specific requirements. Whatever your operational situation, Equipment Placement can supply a service, fuel or water truck to meet your exact needs.



Isuzu FVZ1400 service truck



Cat 773D fuel truck



Tatra service truck



Cat 730 water truck



Isuzu 450 potable water truck



Isuzu service truck



Cat water truck



Mack service truck



Refurbished service modules to suit a range of carriers



Cat 775D water truck





For Fuel, Lube and Hydraulic Oils
Fixed, Mobile and On-Board Systems

Filter Technology Australia provides world class knife edge filtration systems that complement existing OEM filtration units. Patented technology removes particulate contamination down to 2 microns. The results are dramatically increased equipment life, oil life and, in the case of diesel powered units, reduced fuel consumption, CO₂ and particulate emissions.

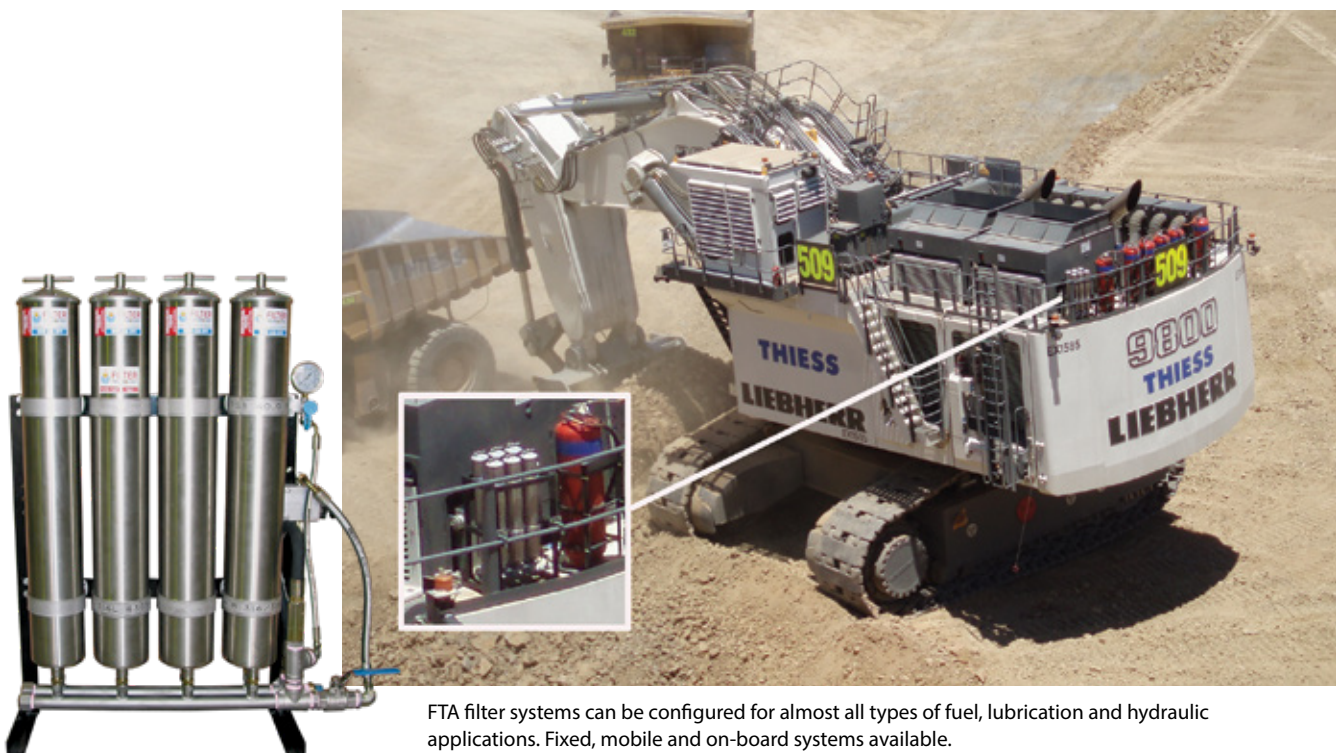
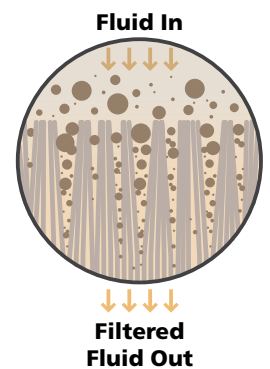
Filter Technology Australia filtration systems combined with Fluid Transfer Management hydrocarbon management services are guaranteed to provide your operation with savings that greatly exceed implementation and maintenance costs.

Available to suit any fixed or mobile plant assembly or vehicle, these units can filter lubricating oil, hydraulic oil, solvents or fuel to remarkable cleanliness ratings for prolonged periods. Mobile kidney loop buggies and backpack mounted units are also available.

- **OEM filter life extended by up to 300%**
- **Oil change frequency greatly reduced**
- **Fuel efficiency increased by up to 7%**
- **Greatly reduced CO₂ and particulate emissions**
- **Protect high tolerance injection systems from damage and premature wear.**



Filter Technology's patented filtration systems remove contaminants down to 2 microns by capturing them in our Australian-manufactured elements

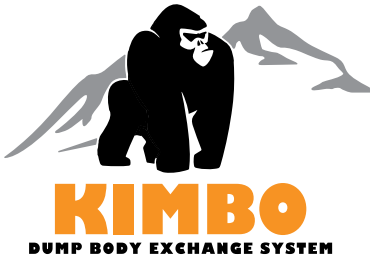


FTA filter systems can be configured for almost all types of fuel, lubrication and hydraulic applications. Fixed, mobile and on-board systems available.



1. Trailer mounted FM42444 bulk fuel filtration unit polishing diesel fuel at Canberra CSIRO tracking station. 2. FM42043 bulk diesel filtration system. 3. Final drive kidney loop filtration. 4. Swing box filtration unit on mining shovel. 5. Portable backpack filtration unit.

DUMP BODY EXCHANGE SYSTEMS



The Kimbo dump body exchange system replaces the traditional unsafe methods of body removal and replacement.

Using Kimbo the dump bodies are securely supported by a 6-column adjustable structure rather than cranes which are commonly used. The system is less affected by adverse weather and even high wind conditions are no issue for the Kimbo.

Kimbo body exchange system is quick, efficient and most importantly SAFE to operate.



Description

The Kimbo Dump Body Exchange System is a 6-column adjustable structure, arranged to provide two working areas for the safe and quick dismounting and mounting of dump bodies. Operation of the system is controlled via a wireless remote control or from a built-in side control panel.

The design and layout allows for dump bodies of different sizes. Removal of locking pins is made easier via remotely operated equipment. Replacement times can be reduced considerably: from 20–30 hours down to as low as 1.5–3 hours.



Description	Changeout using cranes	Changeout using Kimbo System
Health and safety risks	High risk due to loads suspended by cable.	Reduced risk due to loads suspended by jacks with safety locks
Operators required	Up to 9	3
Replacement time	Up to 33 hours	1.5 to 3 hours
Weather conditions	Work suspended if wind gusts exceed 35 km/h	Work may continue in most weather conditions
Cranes required	2	None
Low loader costs	Required to move cranes	None



Jama's unique wheel carrier is designed for handling wheel rims, tyres and even wheel motors. Precision-engineered bogies with hydraulic drive and diagonal steering are controlled by a joystick, offering incredible precision when offering up the wheel component for refitting.

The safer and more productive way to remove wheels, hubs, struts and wheel motors. Jama has been tried and tested in the mining industry since 2004.

- Improves mine site productivity by minimising downtime associated with wheel servicing.
- Improves efficiency in the workshop.
- Millimetre precision when taking on/off wheels.
- Flexible and accessible – joystick and diagonal steering optimise manouvering when changing wheels – only the width of the wheel carrier is needed in the workshop area.
- Improved service personnel safety.
- Can handle wheels, wheel motors and struts.
- Easy to use – the whole process is simplified.
- No need for overhead crane
- Advanced and reliable electronic technology.



Control module



Power supply spool



TED™ (Tracked Elevating Device) is a track driven, all-terrain, battery operated, remote controlled belly plate jack.

TED™ removes the need for personnel to place themselves under suspended loads associated with the maintenance of heavy earth-moving equipment. Being a low profile design, TED™ can be used in very tight spaces under machinery to carry heavy components and manoeuvre them safely over all kinds of terrain.



A variety of attachments are available for TED™, with further options under development

Overview

- Simple and safe to operate.
- Powered by a 12 volt rechargeable, non-hazardous battery system.
- The operational functions are controlled via an easy to use wireless remote control handset.
- All-terrain skid steer tracks are individually powered by hydraulic motors.
- SWL 800 kg (Independently Certified); maximum lift height 1170 mm.
- Turntable on the platform allowing secured loads to be swiveled.
- Several built in safety features including: load lock valves on each ram, strobe and alarm, emergency stop buttons on handset and unit, deadman switch.
- TED™ complies with Australian Standards AS4100, AS3990 & AS1554



Specifications

L x W x H (compressed)	1374 x 778 x 315 mm
L x W x H (extended)	1374 x 778 x 1172 mm
Ground Clearance	60 mm
Weight	580 kg
Safe Working Load	800 kg
Motor Type	DC 12 volt, 2 kW
Battery Type	2 x 6 volt, 224 amp AGM
Charger	12 volt, 20 amp
RC Handset/Receiver	Magnetek, Flex pro 8
RC Frequency	Ranging from 433 to 434 MHz depending on the coded channel

Handle your fuel, hydraulic fluid and lubricants with efficiency and safety

Fluid management products from Equipment Placement, along with group partner Fluid Transfer Management address the issues of refuelling and spillage management and fluid sampling all the way to complete hydrocarbon management systems.

HYDRAU-FLO®
Safety Solutions for Liquid Filling

Hydrau-Flo® non-pressurised fuel filling systems, supplied and installed by Equipment Placement, enable safe and efficient refuelling, removing the risk of overflow, spillage and tank rupture. Designed to be used in conjunction with existing dry break refuelling systems, the Hydrau-Flo® system is simple and reliable. It incorporates a fuel filler safety valve working in unison with a float control valve to shut off the fuel supply when it reaches a pre-determined level.

Because the Hydrau-Flo® system does not use electronics or complex mechanical arrangements, it is reliable and cost-effective.



Float control valve



Standard Black fuel filler safety valve for new installations and existing equipment with suitable fittings



Retro fit Blue fuel filler safety valve for most Cat and Komatsu



Retro fit Red fuel filler safety valve for tanks using Wiggins ZNC3

Integrated Breather Float Control Valve

The integrated breather float control valve is capable of environmental filtering to 3µm as well as venting the tank at rates of up to 1000 Lpm during filling. This product can further enhance diesel engine life in dusty environments.

The breather retains all the original anti-surge functions of the standard green float control valve but has additional check valves built into the design to allow venting at 1000 Lpm and one-way breathing to prevent any contaminants from being drawn into the fuel tank.

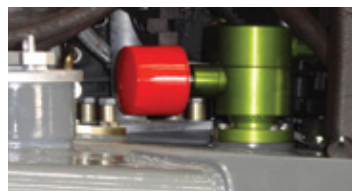
For existing systems the float control valve is able to be retrofitted without removing the original valve from the fuel tank, providing a cost-effective solution to upgrade your existing Hydrau-Flo® system.



Hydrau-Flo integrated breather float control valve



Cat 793 Hydrau-Flo blue valve and receiver assembly



Hydrau-Flo PCV with breather



Cat 793 Hydrau-Flo black valve



Hydrau-Flo installed on Hitachi EH4000



Cat 793 Hydrau-Flo float



Mining vehicles require regular cleaning to operate correctly and safely. This can be time-consuming – a full manual clean taking from 8 to 15 hours. InterClean products reduce the time to clean these vehicles, decreasing equipment downtime.

InterClean offers several designs and equipment packages using relatively low pressure at high volumes to remove the soiling buildup. This technology is both highly effective and safe.

Heavy vehicle automatic drive-through washes

Fully automatic drive-through packages for haul truck washing offer a much faster, more effective and safer solution, which gets the job done in a fraction of the time compared with manual washing.

Light to medium vehicle washing systems

InterClean has designed and installed several light to medium vehicle wash packages worldwide. They are designed for larger street legal vehicles and are suitable for moderate to heavy mud applications.

Our wash systems rely on high volume low pressure to remove heavy mud and dirt without causing damage to the running gear.

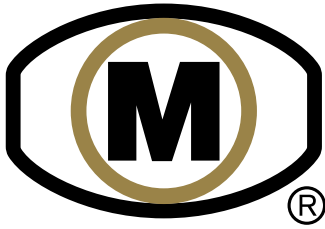
Patented nozzle system for detailed cleaning

The InterClean Centri-Spinner high pressure system (300 psi / 20.5 bar) offers fantastic cleaning results while using recycled water for a more detailed cleaning of the vehicle. This patented nozzle system has been installed on countless wash systems around the world.

Haul truck wash systems are an important component for a mine operation and must feature trouble-free operation and low maintenance. The WashMan filtration system requires no consumables and provides high-quality recycled water on demand, offering a very small footprint.



- Power assisted zero degree nozzles
- Hydrodynamic rotational speed control
- Rotational speed range 60 – 200rpm
- Mechanical high pressure seal
- 270 – 330 psi operational pressure
- Flow rate up to 1 litre per second



Leading manufacturer of high pressure water dispersal



Magnum has been developing robust, functional and cost effective high-pressure water dispersal products for over four decades. Initially focused on the mining and quarry industries, applications now include the petrochemical, agricultural, fire fighting and vehicle wash-down industries - with customers in five continents.

Product focus is on quality. All of Magnum's products are made in-house, or sourced from reputable 'brand name' suppliers from around the globe. Magnum does not market inferior products. They are the innovators of the industry.



Monitors

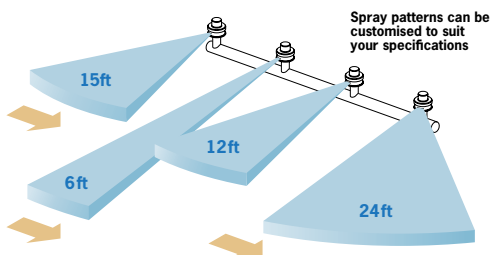
Magnum water cannons are the best in the business. From the small, manual MM40, right up to the fully remote controlled RM100 and beyond, Watermark water cannons are the most sturdy and dependable monitors on the market. Built to be used and abused, these cannons can survive the harshest of environments.



Spray Head Valves

Magnum spray head valves offer the most control and reliability of anything on the market. Built from the highest quality marine-grade alloys, with polymer inserts utilizing the latest developments in materials engineering providing low-maintenance, low fuss water dispersal in all environments.

Details available at www.magnumaustralia.com



Air purification technology for cleaner running and longer life

turbo[®]

PRECLEANER

Air filter Pre-cleaners

Turbo Pre-cleaners remove up to 98% of the dirt, dust, rain and snow before it reaches the air filter. Air filter life can be extended by 8 to 10 times, while saving fuel, maximising power and extending engine life.

OEM supplied pre-cleaners are NOT enough! Independent tests show that Turbo's 'Custom Balance' units remove 50% more of the dust that other pre-cleaners let through to the filter, while adding only half the air restriction.

There is no other unit, OEM supplied or other aftermarket, that has the "balance" of performance and engine protection when compared with Turbo.

Equipment Placement will specify and install the right Turbo Pre-cleaner for your equipment, both new and retrofit.



Turbo II Pre-cleaner installed on Cat 980 wheel loader



Turbo II Pre-cleaners installed on new Komatsu HD785 dump truck



Contamination Control Breathers

Using a combination of silica desiccant and carbon filter technology, Air Sentry contamination control breathers effectively remove water, solid particles and other contaminants from air being vented into reservoirs, transformers, storage tanks and gearboxes.

Removing these contaminants greatly extends the service life of equipment and fluids.

Equipment Placement can supply and fit all types of Air Sentry filters in a large range of sizes for different environments.



Hydraulic powered auto lubrication systems for fixed and mobile plant

EASILUBE®

Easilube auto lubrication systems are designed and manufactured in Australia for auto lubrication in rugged conditions and feature a single shot hydraulic pump with a reservoir capacity from 5 kg up to 90 kg.

Equipment Placement can supply and install an Easilube system which is ideal for underground and open cut mining operations.

Originally designed for the harsh underground mining equipment, Easilube Systems are now finding their niche in the open cut industry.

Simple operation with very few moving parts and simply plumbed into a frequently used hydraulic circuit, the Easilube System is the obvious choice for automatic lubrication systems.



- **Designed & manufactured in Australia**
- **Single shot hydraulic pump**
- **Bulk fill reservoirs from 5 kg to 90 kg**
- **Used at open-cut and underground mines throughout Australia**





AUSTRALIA

PTY LTD

FSP International supplies high quality polyethylene products for mining, industrial and construction industries. Equipment Placement holds a number of items in stock and produces other items to order.

With several Australian Design registrations, FSP products are constantly developing simple, clever solutions to everyday problems encountered by industry.

Products include fire hose cabinets, lockers, steps and chocks, cable supports and crossovers, lockable tool cabinets, modular storage cabinets, oil trollies and much, much more.

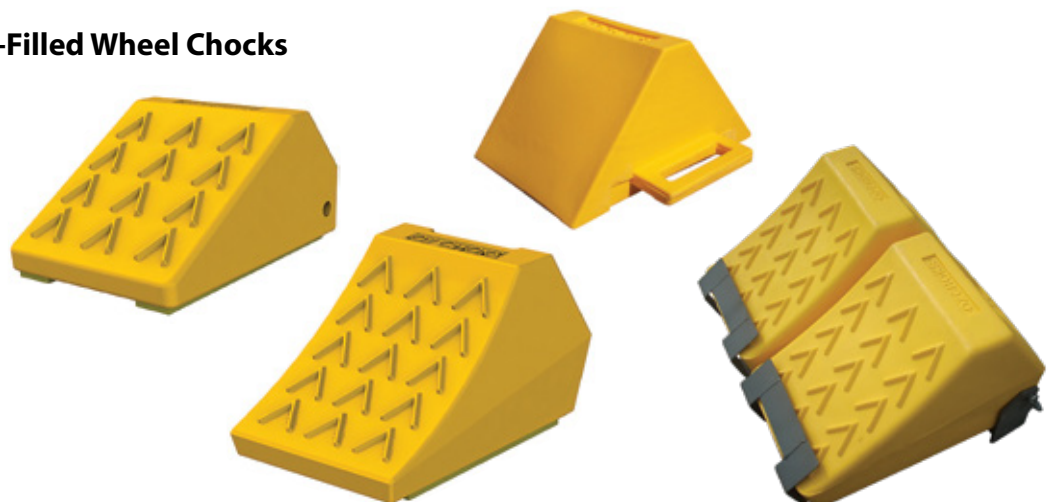
Features

- High quality polyethylene manufacture
- Impact resistant and UV stable
- Lightweight, easy to carry yet immensely strong
- Wide range of colours available in most product lines.

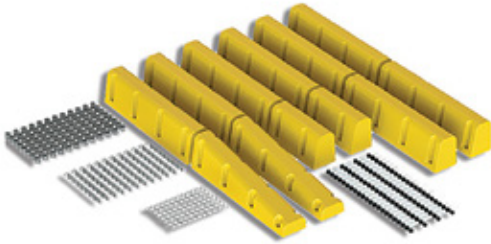
Oz Choks® Urethane-Filled Wheel Chocks

FSP Oz Choks® are low-maintenance, rotationally molded, and constructed using one piece. This makes them light weight, UV stable, heavy duty, chemical, oil and water-resistant, ultra-durable and resistant to corrosion.

Available in heavy duty for recreational applications.



Hungry Boards and Head Boards Kits



Hungry boards and head boards enable increased payloads and reduced risks of material spillage, thus improving safety and cutting down on damage to vehicles and roads from falling debris.

The Spill Protection System is low-maintenance, light weight, heavy duty, weather resistant, ultra durable, corrosion resistant and UV stable. The system is designed as modular components which are easy to handle, install and replace.

200 and 400 mm height kits available



OzLoka Polyethylene Modular Lockers



Fire Safety Cabinets and Brackets



Work Platforms and Cable Protection



Work platform



Cable horse



Cable bridge

Oil Drain Trays and Trolleys



Oil drain trolley



Drum storage bund



Hose Reels

Oz Box Tool Box



EQUIPMENT
PLACEMENT
Sales and Services

Office: 170 Kewdale Road, Kewdale, Western Australia 6105

Postal: PO Box 834 Cloverdale WA 6985

Telephone: +61 8 9479 4988 Fax: +61 8 9479 4588

www.equipmentplacement.com.au

Due to Equipment Placement's policy of constant improvement, products and services shown in this brochure may be subject to change.